

VITCARE

Social interactive care system

by **Compexin Romania**

Mrs.Mara MANAILESCU



mara.manailescu@compexin.ro



+34 673 263 799



maradiaconu

Who We Are

Our ambition is to be one of the European reliable partners in development of new ICT solutions for a better and innovative future.

Compexin is a SME with wide experience in implementation of **software systems and services for mobile/web/cloud** based on the latest technologies.

20 year experience in managing projects with proven expertise in:

- software architectures and user interfaces
- mobile applications
- data management software
- water management software
- automation and network infrastructures projects

R&D projects:

AAL 2014 – Senior-TV

H2020 – ICT, Health and SME Instrument

National research projects

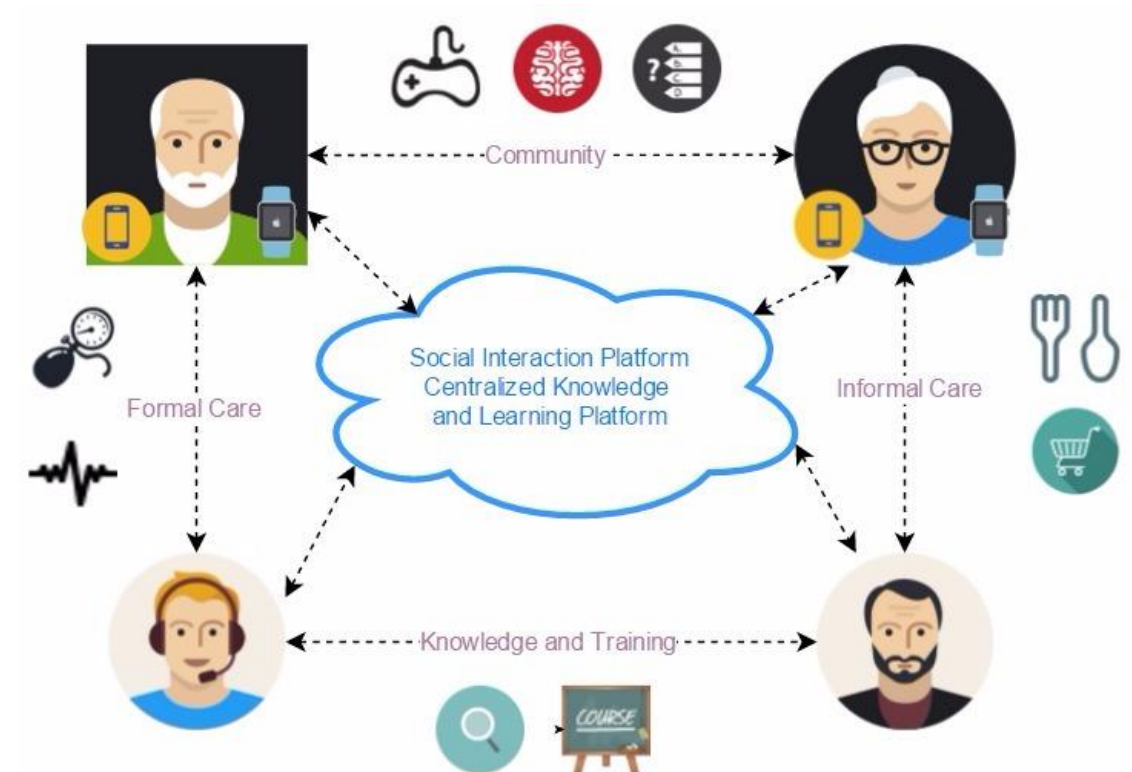
VITCARE

Platform main features:

- Health monitoring
- Activity monitoring indoor/outdoor
- Remote assistance
- Knowledge sharing and training for carers
- Built-in apps for social, networking and daily activities

Target Groups:

- ✓ people in **early** stages of dementia
- ✓ people with dementia in the **middle** stage
- ✓ **informal and formal carers**



Looking for

Type of partners	Role in the project	Expertise
SME, COMPEXIN	Software integrator	Mobile, Web, Cloud
RTD, UNIV	Development and integration of communication and training software services	Knowledge in implementation of communication and social networking apps/services/games using latest technologies
SMEs, RTD	Software developers for mobile and wearable applications and services	Knowledge also in integration and development of health wearable and the related apps with mobile and cloud based services
RTD, Hospitals, Clinics	Provide expertise and support in developing the accurate system and apps for the people with dementia	Clinic and technical expertise in developing methodology of prevention, detection and intervention for people living with dementia; researchers, doctors, psychologists, medical assistants, etc
SMEs	Market and exploitation strategy Business case development	Expertise in communication, dissemination and exploitation of the project results
END-USERS Health Organisations	Involvement in pilot setup, development, testing and validation	Previous experience in health projects, access to a mixed group of users (people with dementia) and caregivers(formal and informal)